



SUPPLY TANKS (CBP)



This manual contains technical information regarding Bayer SeedGrowth™ Equipment. Please read and understand these instructions completely before proceeding to install and operate the equipment. Bayer reserves the right to change specifications, models, components, or materials at any time without notice. For additional equipment information contact us at 1.800.634.6738. Please have this manual available when contacting Bayer.

This manual uses signal words and symbols to help avoid personal injury. Danger, Warning, and Caution are signal words used to identify the level of hazard.



Danger alerts that an extreme hazard will cause serious injury or death if operators or installers do not follow the recommended precautions.



Warning alerts that a hazard may cause serious injury or death if operators or installers do not follow the recommended precautions.



Caution alerts that a hazard may cause minor or moderate injury if operators or installers do not follow the recommended precautions.



Tip: calls attention to special information.



Note: emphasizes general information worthy of attention.



Example: gives a problem or exercise that illustrates a method or principle.

Always use caution and common sense when working with any chemical. Read the product label and SDS carefully and follow their instructions exactly as described.

Optimal operating conditions for this piece of equipment requires an ambient temperature 32° F to +104° F (0° C to +40° C), relative humidity less than 90% (minimum condensation). Make necessary provisions to protect this piece of equipment against excessive dust, particles containing iron, moisture and against corrosive and explosive gases.

Our technical information is based on extensive testing and is, to the best of our current knowledge, true and accurate but given without warranty as the conditions of use and storage are beyond our control. Variables, such as humidity, temperature, change in seed size or variety and viscosity of chemical products can all affect the accuracy of the chemical application and seed coverage. To ensure the desired

application rate and optimum seed coverage, check the calibration periodically throughout the day, and make adjustments as needed.

CONTENT

#1	SYSTEM DIAGRAM	04
#2	EQUIPMENT INSTALLATION	05
	Spill Containment	05
	Treatment Line Connection	05
	Tank Operation	06
#4	EXPOSURE CONTROL	07
#5	MAINTENANCE	08
	Premium Filter	08
	Rinse & Drain the Tank	09



Bayer

Crop Science Division
1451 Dean Lakes Trail
Shakopee, Minnesota 55379
USA

Phone: +1 952 445 6868
Toll Free: +1 855 363 3152

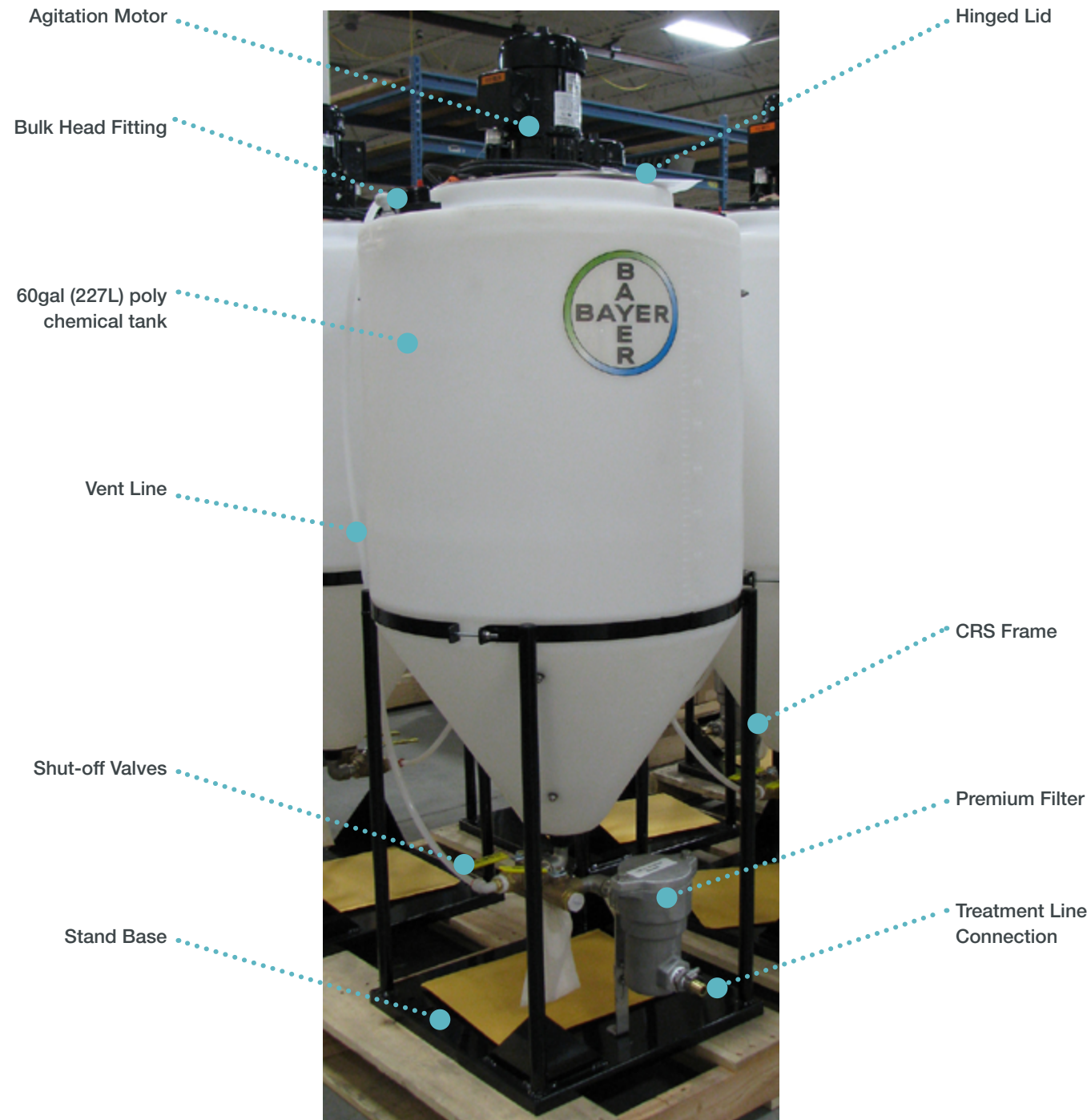
E-mail: equipment@bayer.com
Web: www.seedgrowth.bayer.com

The Bayer Cross is a registered trademark of Bayer.

SUPPLYTANKS20211022

SYSTEM DIAGRAM

CONE BOTTOM POLY TANK (CBP) WITH AGITATION, NO PUMP



EXPLANATORY NOTES

Dry Weight
80lbs (27kg)

Height
66.5" [1689mm]

Capacity:
60gal [227L]

EQUIPMENT INSTALLATION



Required assembly tools

- Slot Screwdriver (1)
- 9/16" wrench (1)
- Hose Cutter (1)

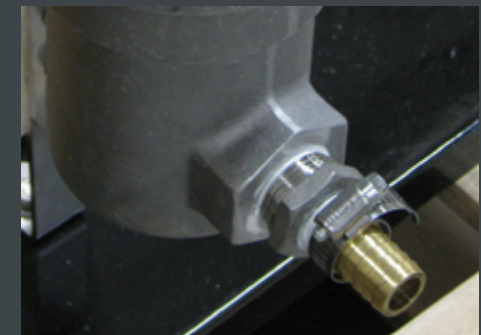
Spill Containment

Spill containment is recommended around chemical supply tanks inside a building or structure.



Treatment Line Connection

Step 1: The Premium Filter Assembly has a Hose Clamp attached. Connect one end of the factory supplied Tubing with Hose Clamp onto the Premium Filter Brass Hose Barb. Tighten in place with a screwdriver.



Step 2: Connect the other end of the Tubing to the BT Pump Brass Hose Barb on a Pump & Weighing Station with Hose Clamp. Tighten in place with a screwdriver.





Warning! Exercise extreme caution when working with chemicals! Refer to the Exposure Control Guide on page 7.

Tank Operation

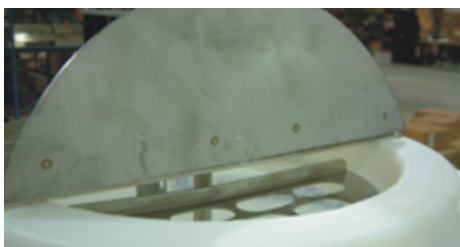
Step 1: Connect the Tank Agitation Power Cord to an external 115VAC power source. Tank agitation begins when power cord is plugged into power source. Install a remote ON/OFF switch for each Tank agitation power cord to avoid connecting/disconnecting for START/STOP modes.



Step 2: Ensure the tank valves are in the CLOSED position.



Step 3: Consult the product label to configure the slurry mix. Open the Tank Cover Lid and pour in desired chemicals. Allow chemicals to agitate for a few minutes.



Step 4: When ready to calibrate, ensure the tank valves are in the TREAT mode. Consult the treater user manual for priming the treatment lines.



EXPOSURE CONTROL

Always use caution and common sense when working with chemicals. Read the product label and SDS carefully and follow their instructions exactly as described. The following Personal Protective Equipment (PPE) recommendations and best practices help promote safe use in seed treatment.



Wear protective clothing

Wear disposable or reusable coveralls with long sleeves.



Hand protection required

Wear chemical-resistant gloves.



Wear rubber boots

Wear chemical resistant rubber boots.



Labels

Label recommendations and directions for handling must be followed, including treatment procedure (use of sticker) as well as the safety requirements.



Treatment products

Keep products in a locked room that has been approved for crop protection products.



Wear a mask

Wear respiratory protection.



Eye protection required

Wear protective eyewear.



Calibration

Seed treatment equipment must be checked and calibrated regularly to ensure accurate and safe application.



Clean seed

Use well cleaned seed to avoid creation of polluted dust that will contaminate the treating facility, workers, farmers and the environment during sowing.



Cleaning

Use a vacuum to clean machines and coveralls. Never use compressed air.



Laundry

Wash soiled reusable clothing separately. Workers must take a shower after each shift.



Empty containers

Non-returnable empty containers must be triple rinsed before they can be disposed. For others the recommendation of the producer must be followed.



Spillage

Spillage must be avoided; it must be thoroughly cleaned up to avoid contaminating the environment and waterways.



Maintenance

Keep machinery clean between treating sessions.

MAINTENANCE

Premium Filter

Step 1: Turn the supply tank valves to the RINSE mode.



Step 2: Check filters periodically for clogging issues. Use a 9/16" wrench to remove the filter cap from the filter body. Remove the filter basket and clean thoroughly.



Step 3: Remove the filter screen from the filter bottom and check it for clogging and material build-up. Clean it thoroughly.



Step 4: Replace the filter basket in the filter body. Replace the filter cap on the filter body. Use a 9/16" wrench to tighten the two bolts.



Rinse & Drain the Tank

Step 1: When the tank is empty, use a crescent wrench to remove the 3/4" Pipe Plug under the Drain Valve.

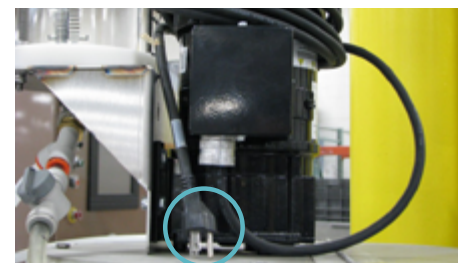
Connect a hose with 3/4" Male fitting to the Drain Valve (customer supplied).

Collection container (customer supplied) must be sufficiently large enough to contain the remaining contents of the Tank: up to 60 gallons.

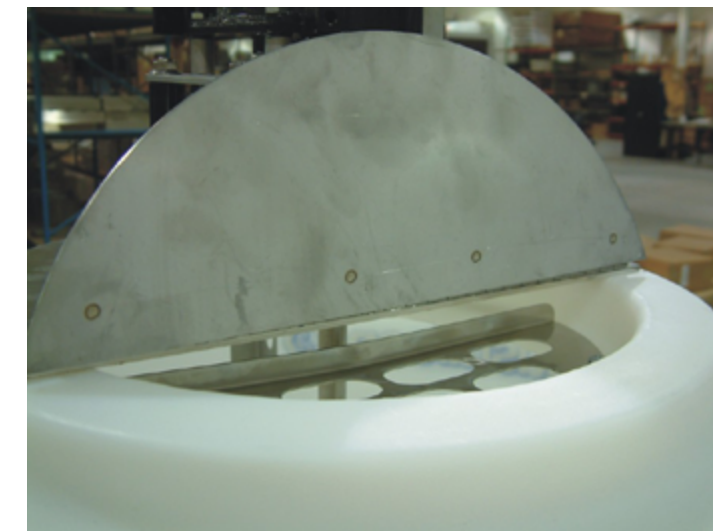
DO NOT RUN INTO A SEWER DRAIN!



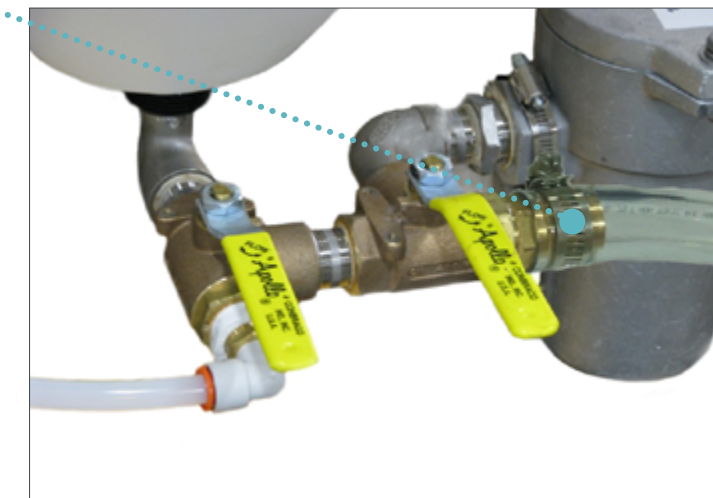
Step 2: Connect the Tank Agitation Power Cord to an external 115VAC power source.



Step 3: Consult the product label to configure the slurry mix. Open the Tank Cover Lid and pour in desired chemicals. Allow chemicals to agitate for a few minutes.



Step 4: Ensure the tank valves are in the RINSE mode. Gravity will drain the tank. Repeat filling and draining the Tank until thoroughly clean and empty.



Step 6: Turn OFF or unplug the Tank Agitation Motor when finished.



Step 7: Ensure the tank valves are in the CLOSED position.



Step 8: Remove the hose with 3/4" Male fitting from the Drain Valve.



Step 9: Replace the 3/4" Pipe Plug on the Drain Valve. Use a crescent wrench to tighten in place.





Note:

Rinse water (gray water) may be saved and used with the next slurry mix or dispose of properly, according to state and local regulations.

If the CBP is going to be stored in subfreezing temperatures, flush with products to prevent freezing such as RV Antifreeze or dilute windshield washer fluid, to prevent freezing which will cause pump damage.

Failure to clean the CBP properly, or failure to completely drain all liquid from the pump and lines after use, may damage the equipment and void any warranties expressed or implied.

It will not damage the pump to run it dry or with the valves in the closed position.



Bayer
Crop Science Division
1451 Dean Lakes Trail
Shakopee,
Minnesota 55379
USA

For fast and easy access to
our website scan the code with
your smartphone and an
appropriate app.

www.seedgrowth.bayer.com