

RH2000 COMMERCIAL DRUM TREATING SYSTEM



RECOMMENDED FOR TREATING SOYBEAN,
WHEAT, COTTON AND RICE SEED



Features & Benefits

- Automatic pump speed compensation helps prevent over / under treatment.
- Rotary volumetric seed wheel provides positive control of seed delivery and precise seed calibration
- MIST-O-MATIC® atomizer for improved treatment-to-seed coverage, does not require any lubrication
- Drum lift bar design helps ensure homogenous treatment-to-seed coverage. Lift bar design, combined with drum speed control, provides gentle tumbling and reduces seed damage
- RH seed treating systems are compliant with all seed company specifications and requirements
- Includes start-up, installation and training
- Site assessments
- CAD drawings for site planning
- Annual software upgrade
- Distributor network
- National service support



CAPACITY

- 2,000 bu/hr
(based on soybeans)

2,000 bu/hr

TREATER DIMENSIONS:

HEIGHT* 115.91" WIDTH 38.75" LENGTH 143.42"

* Adjustable



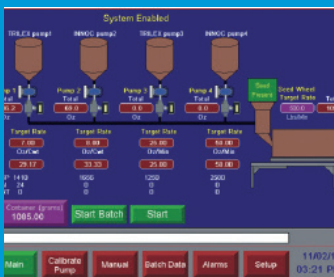
1) Rotary Volumetric Seed Wheel

- Precise calibration and positive seed delivery control
- Rotary seed wheel connected to control box
- High quality stainless steel construction
- Connected to commercial grade AC and gear motors
- True 2,700 bushels per hour (based on soybeans)
- Safety guard above the seed wheel
- Seed sensor – if no seed available, system will shutdown



2) Chemical Supply Tank & Pumping System

- Top Mount 100 oz Closed Calibration
- Provides accurate real time calibration by volume
- Peristaltic pump equipped with various element sizes
- Chemical recirculation function
- Quick disconnect fittings for easy cleaning
- Tank agitation – for continuous chemical suspension
- When seed wheel stops, the pump stops
- Closed calibration limits worker exposure



3) Single Control Panel

- Automatic pump speed compensation helps prevent over / under treatment
- UL 508 Listed control panel provides easy recipe creation and controls up to four pumps simultaneously or individually
- State of the art electronics 12" color touch screen HMI interface and highly accurate AC variable frequency drives
- PLC features data and reporting output capabilities (printer not included)
- Variable speed drum control provides maximum blending efficiency and easily accommodates different seed types



4) Drum & Frame Assembly

- Adjustable drum and frame accommodates for unique seed flow changes
- Stainless steel mixing drum with lift bars
- Adjustable drum angle and frame height
- Stainless steel doghouse with dust evacuation port
- Removable doghouse door
- CRS drum guards



Bayer

Crop Science Division
1451 Dean Lakes Trail
Shakopee, Minnesota 55379 - USA
www.seedgrowth.bayer.com
Phone: +1 952 445 6868
Toll Free: 1 855 363 3152
E-mail: equipment@bayer.com



VALUE ADDED OPTIONS

- 8' x 36" stainless steel mixing drum
- Upgrade current HC 2000 model with RH 2000 treater head
- Accommodates up to four slurry mix tanks
- Supports either a 15 or 30 gallon Inoculation tank
- Six inch OD connection for the exhaust unit is located at the discharge end of the treating drum; recommended aspiration: 500–600 cfm
- Optional inlet surge bin
- Optional inlet conveyor control for automating conveyors: includes HI / LO sensors. Compatible with most automated system controls

FLOW METER

- Helps prevent costly spills due to hose malfunction
- Flow meter communicates with the PLC
- Easy cleaning and maintenance
- Cost effective and quality design



Before using any crop protection product you should read and carefully follow directions, cautionary statements, and other information appearing on the product label. Our technical information is based on extensive testing and is, to the best of our current knowledge, true and accurate but given without warranty as the conditions of use and storage are beyond our control. Descriptions and property data of the product do not contain any statement as to liability for possible damage.

RH2000COMMERCIAL20211015